



GAT MONTHLY MEMBERSHIP PROGRESS REPORT

Results as of: 3/31/2026

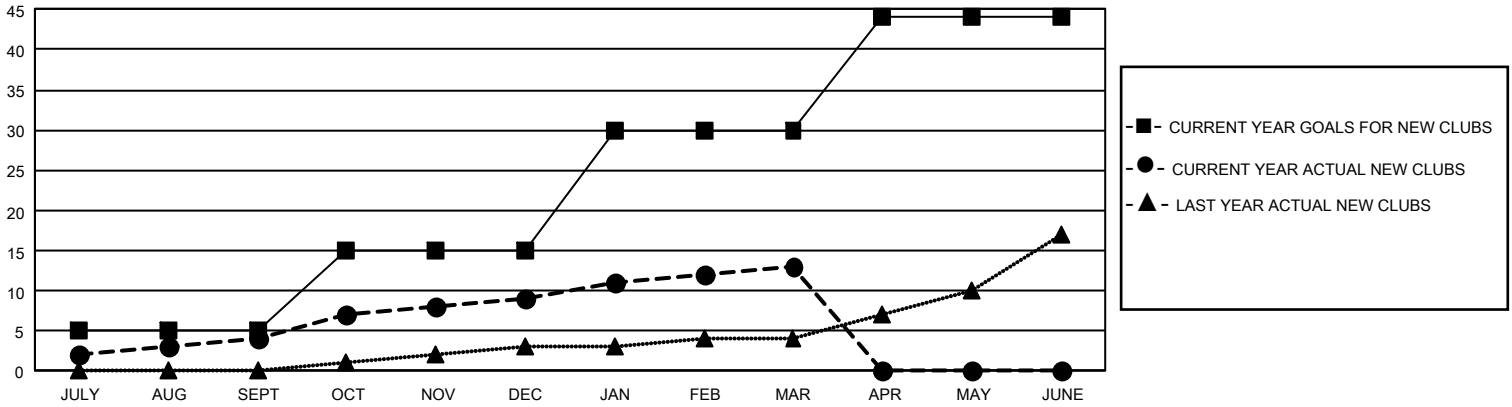
GMT Constitutional Area 1, Group H

REPORT DOES NOT INCLUDE CLUBS IN UNDISTRICTED AREAS.

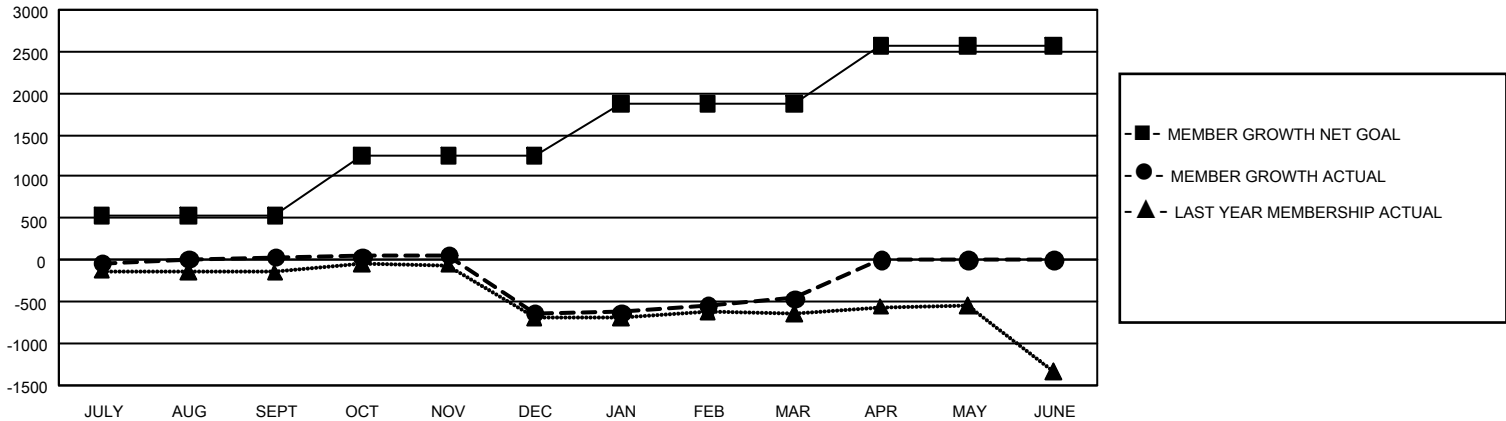
| Clubs | | | |
|-----------------------|---------------|-----------|---------------|
| RESULTS FOR 2025-2026 | | | |
| QUARTER | NEW CLUB GOAL | NEW CLUBS | DROPPED CLUBS |
| JULY/AUG/SEPT | 15 | 4 | 8 |
| OCT/NOV/DEC | 30 | 5 | 26 |
| JAN/FEB/MAR | 45 | 4 | 6 |
| APR/MAY/JUNE | 42 | 0 | 0 |

| Members | | | |
|-----------------------|------------------------|----------------------|--|
| RESULTS FOR 2025-2026 | | | |
| QUARTER | MEMBER GROWTH NET GOAL | MEMBER GROWTH ACTUAL | DROPPED MEMBERS ACTUAL (including transfers) |
| JULY/AUG/SEPT | 534 | 1,074 | 855 |
| OCT/NOV/DEC | 720 | 848 | 1,408 |
| JAN/FEB/MAR | 625 | 1,130 | 788 |
| APR/MAY/JUNE | 688 | 0 | 0 |

GOALS AND ACTUAL NEW CLUBS CUMULATIVE



GOALS AND ACTUAL MEMBERS CUMULATIVE



| | | | |
|------------------------|--|---------------------------------|-----------------|
| DROPPED CLUBS: 40 | 639 CLUBS OF 1,285 ADDED 1 OR MORE NEW MEMBERS | <u>GENDER DISTRIBUTION</u> | |
| | | MALE | 16,533 (55.65%) |
| <u>DROPPED MEMBERS</u> | | FEMALE | 13,159 (44.29%) |
| | | NON BINARY | 3 (0.01%) |
| DECEASED | 321 | PREFER NOT TO ANSWER | 13 (0.04%) |
| CLUB CANCELLED | 203 | TOTAL FAMILY UNIT MEMBERS | 5,606 |
| OTHER | 2,524 | FAMILY MEMBERS PAYING HALF DUES | 2,873 |
| TOTAL | 3,048 | | |

[CLICK HERE FOR CUMULATIVE MEMBERSHIP DATA](#)